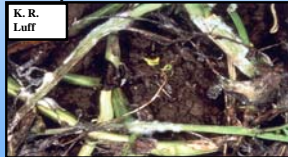


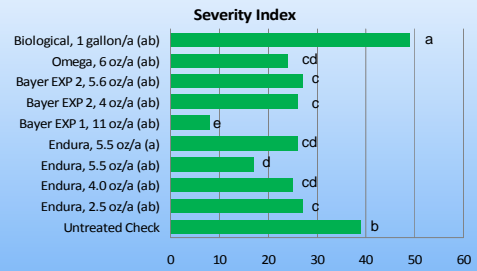
White Mold Trial

Disease severity in the untreated check:

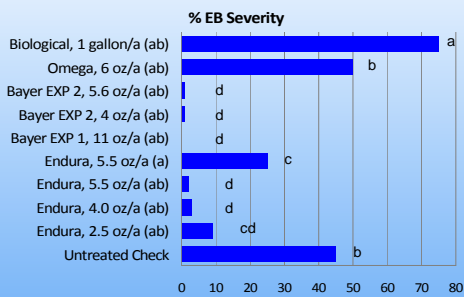
- 87% of the stem were infected
- 100% of the plants infected
- 39% of the entire plant was dead or dying



Effect of White Mold Programs on White Mold Severity

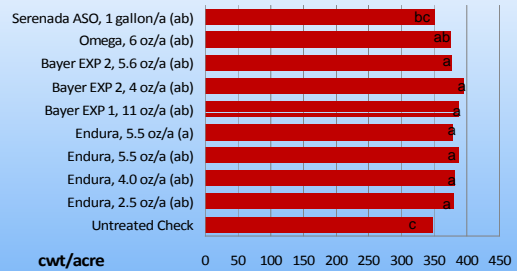


Effect of White Mold Programs on Early Blight Severity



Evaluated August 20

Effect of White Mold Control on Yield



Products for White Mold Control

- Endura
- Bayer experimental (fluopyram; will be called Luna)
- Omega
- Others labeled

Caution about late blight

- Endura/Luna are not strong against late blight.
 - Great on early blight
 - Great on white mold

